

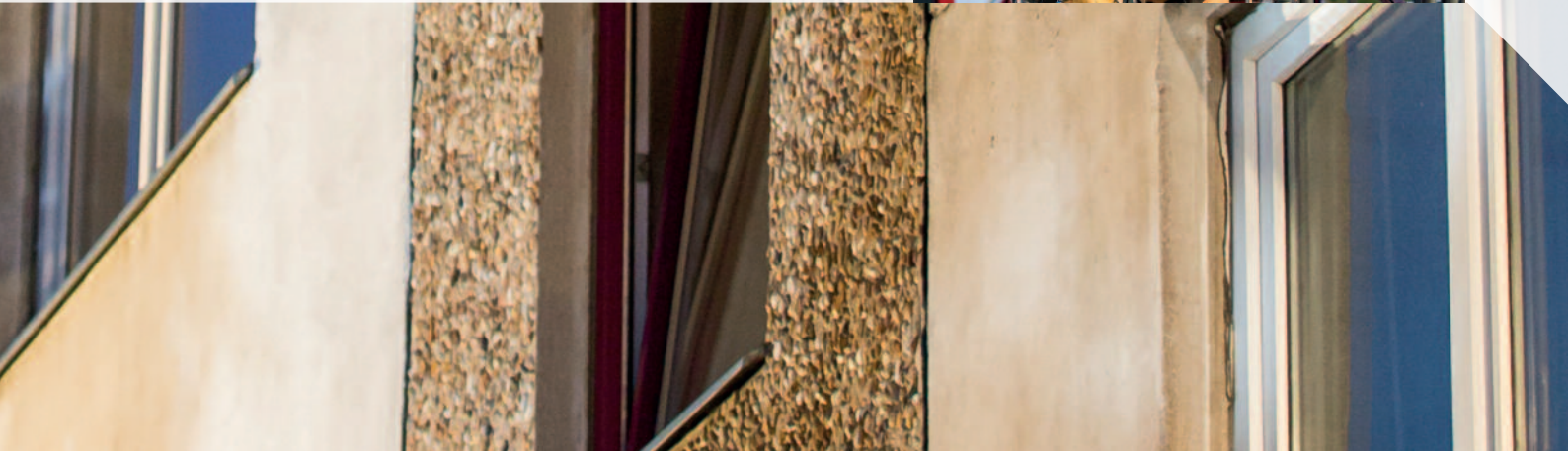
# alphaFP

Fall Protection Harness for SCBA



*Applications that require both SCBA and fall protection are always challenging for the user. Putting a breathing apparatus on top of a fall protection harness is time-consuming when it comes to donning and uncomfortable in use.*

*To combat this, MSA has developed an innovative and unique 2-in-1 solution, the **alphaFP SCBA harness**. It can be connected easily to any MSA SCBA backplate.*



*Because every life has a **purpose**...*

*alphaFP offers the highest safety in exposed situations. Its excellent wearer comfort makes the alphaFP ideal for height and shaft rescues, respiratory protection and tunnel operations.*

With the alphaFP donning is completed in very few and intuitive steps – thanks to its front opening system even within the confines of a vehicle. This saves time for the user – valuable time when it comes to rescue and saving lives.

Hose protection tunnels on the shoulder pads and quick connect buckles between harness and SCBA provide ease of mounting or emergency removal during operation.

## Applications

### Fall Arrest

Solid stainless steel rings serve as attachment points for fall arrest lanyards.

### Positioning

D-rings on each side of the hip belt allow for safe positioning on an exposed work site.

### Rappelling

Prolonged operations on a rope can be conducted in comfort, as the hip harness with both leg loops turns into a comfortable seat. By virtue of its slide-through design, normal walking is unobstructed.

### Rescue

The back D-ring can be used for safe rescue from confined space.



## Approvals

- **EN 361** (Fall arrest)
- **EN 358** (Work Positioning)
- **EN 813** (Sit Harness)
- **EN 137:2006**, class 2 (Fire Service Breathing Apparatus)

MSA is the first to offer a fall protection harness for SCBA with combined approval according to EN 361, EN 358, EN 813 and EN 137. alphaFP can be combined with an emergency back pack. Certified with emergency back pack EUROPE B9000 by Fair Rescue International, Austria.

## Ordering Information

Part No.	Description
10116541	alphaFP pro, standard
10117573	alphaFP pro, large

*Please contact your local MSA partner for information on relevant training (application and service).*

### Your direct contact



**Great Britain**  
 Lochard House, Linnet Way  
 Strathclyde Business Park  
 Bellshill ML4 3RA  
 Phone +44 16 98573357  
 Fax +44 16 98740141  
 info.gb@MSAsafety.com



*For contact details of your local MSA affiliate, please visit our website.*